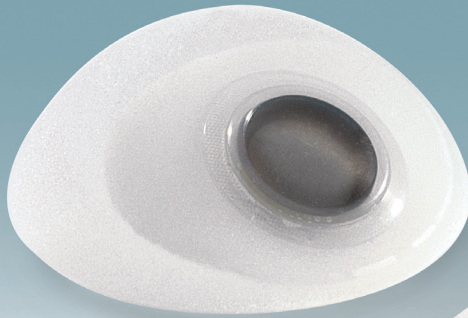
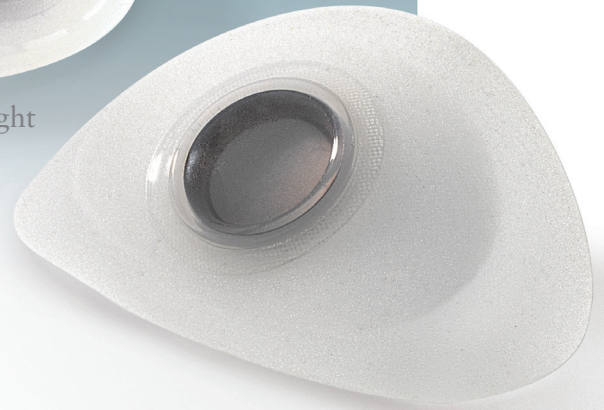


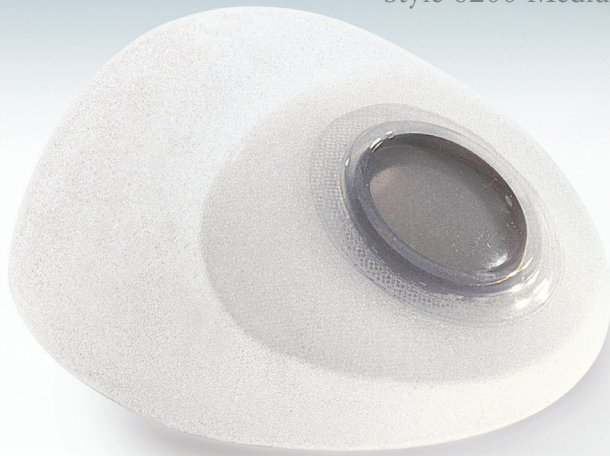
Siltex[®] Contour Profile[®] Breast Tissue Expanders



Style 6200 Medium Height



Style 6100 Low Height



Style 6300 Tall Height

- Self-sealing BufferZone™ Area
- Contour Shape with Directional Expansion
- Centerscope[®] Magnetic Injection Port Locator
- Larger Integral Magnetic Injection Dome* with Palpation Ring
- Reinforced Posterior Orientation Tab

*Injection Dome Not MRI Compatible



the power to transform[®]
MENTOR



Siltex® Contour Profile® Breast Tissue Expanders

Siltex® Low Height Contour Profile® Breast Tissue Expander (Style 6100)

Device Volume cc	Catalog Number	Width cm	Height cm	Projection cm
250	354-6111	11.4	8.1	6.1
350	354-6112	12.7	9.4	6.5
450	354-6113	14.0	10.2	7.1
550	354-6114	15.0	10.9	7.4
650	354-6115	15.7	11.2	7.9
750	354-6116	16.5	11.9	8.1

Siltex® Medium Height Contour Profile® Breast Tissue Expander (Style 6200)

Device Volume cc	Catalog Number	Width cm	Height cm	Projection cm
275	354-6211	10.7	9.3	6.2
350	354-6212	11.7	10.0	6.6
450	354-6213	12.7	10.8	7.0
550	354-6214	13.5	11.7	7.4
650	354-6215	14.6	12.6	7.6
800	354-6216	15.6	13.3	8.0

Siltex® Tall Height Contour Profile® Breast Tissue Expander (Style 6300)

Device Volume cc	Catalog Number	Width cm	Height cm	Projection cm
250	354-6311	10.1	10.7	5.6
350	354-6312	11.3	11.8	6.0
450	354-6313	12.3	12.9	6.5
550	354-6314	13.2	13.8	6.9
650	354-6315	14.0	14.6	7.3
750	354-6316	14.6	15.3	7.6
850	354-6317	15.4	15.9	7.9

Accessory Items

Catalog Number	Description
350-4402	Centerscope® Magnetic Injection Port Locator
200593-001	21-gauge winged infusion set (each)
0204008 Rev A	Contour Profile® Tissue Expander Template



Centerscope® Magnetic Injection Port Locator

The Contour Profile® Tissue Expander is packaged with a 21-gauge needle and Centerscope® Magnetic Injection Port Locator.

Note: Individual implant dimensions may vary slightly in products of this type. Not all units will conform exactly to the dimensions noted above.

350 cc Comparison



201 Mentor Drive
Santa Barbara, CA 93111 USA
(805) 879-6000

Customer Service:
(800) 235-5731
Fax: (805) 967-7108

www.mentorcorp.com

Manufacturer:

Mentor
3041 Skyway Circle North
Irving, TX 75038 USA

European Representative:

Mentor Medical Systems B.V.
2333 CL Leiden, The Netherlands

INTERNATIONAL OPERATIONS



Mentor Medical Systems, Australia, Pty. Ltd. Tel: +61 2 9251 8111 Toll Free: +1 800 338 160 Fax: +61 2 9251 8333

Mentor Medical Systems, Canada, Inc. Tel: +1 905 725 7763 Toll Free: +1 800 668 6069 Fax: +1 905 725 7340

Mentor Deutschland GmbH Tel: +49 811 600 50 0 Fax: +49 811 600 50 11

Mentor Medical Systems France, S.A. Tel: +33 1 30 07 07 60 Fax: +33 1 30 07 07 67

Mentor Medical Systems Iberica, S.L. Tel: +34 91 562 2700 Fax: +34 91 728 3367

Mentor Medical Italia, S.r.l. Tel: +39 0 2 880 7761 Fax: +39 0 2 7209 3710

Mentor Medical Systems Ltd., U.K. Tel: +44 1635 511800 Fax: +44 1635 511810